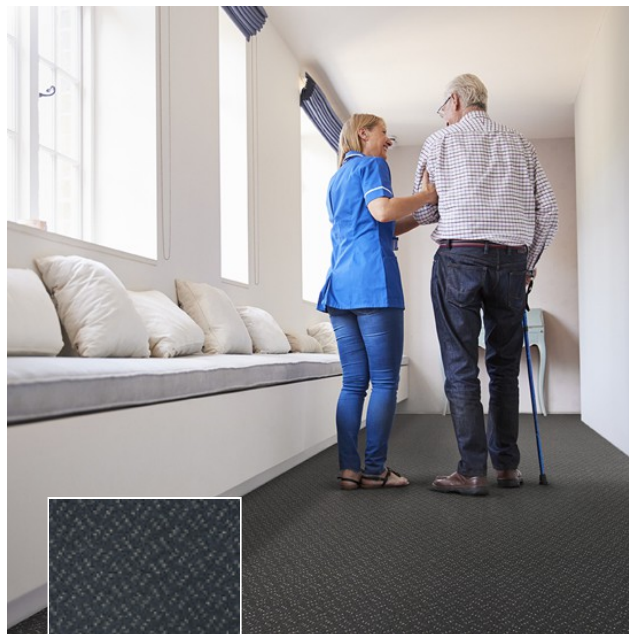


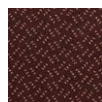
Scala Classic

SPECIFICHE

Sottofondo:	Impervious
Codice Qualità:	SCB
Tecnica di fabbricazione:	Tufted
Tecnica di fabbricazione (hospitality):	Cut Pile
Composizione felpa:	
Composizione felpa (hospitality):	
Reazione al fuoco:	
EN 1307 Classificazione:	



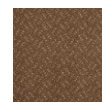
830 / Scala Classic / Cenere



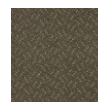
100
Chianti



230
Lino



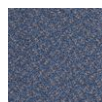
270
Sughero



420
Castoro



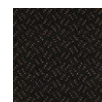
480
Orzo



770
Zaffiro



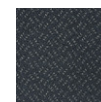
790
Indaco



810
Astracan



820
Ardesia



830
Cenere



860
Ghiaia



870
Argento