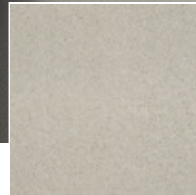


Startwist Elite

TECHNICAL SPECIFICATIONS

Secondary backing: LSAE
 Quality code: LSAE
 Manufacturing process: Tufted
 Pile composition: Essenz Solution Dyed



882 / Startwist Elite / Pearl 2

- | | | | | |
|---|--|---|---|---|
|  |  |  |  |  |
| 063
Heather 3 | 113
Carmine
3 | 270
Almond | 373
Gold leaf
3 | 433
Bamboo
mat 3 |
|  |  |  |  |  |
| 450
Sand | 591
Moss 1 | 751
Sky 1 | 791
Midnight
1 | 805
Ebony 5 |
|  |  |  |  |  |
| 850
Moonbeam | 862
Granite 2 | 865
Granite 5 | 870
Silver | 882
Pearl 2 |
|  | | | | |
| 890
Snow | | | | |