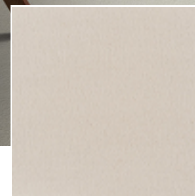


Zen

Polyamide carpet, known for its durability, can be used in any room. One of the most important advantages is the fact that the carpet fibers can stand up to a lot of wear and tear. This makes the use of nylon carpeting especially practical in areas where there is a lot of foot traffic since the synthetic fibers hold their shape longer than many other types of fibers. As a result, the pile of the polyamide carpeting looks new and fresh for many more years than other carpeting selections.

TECHNICAL SPECIFICATIONS

Secondary backing:	SB
Quality code:	ZEN
Manufacturing process:	Tufted
Manufacturing process (hospitality):	1/10" Saxony
Pile composition:	PA
Pile composition (hospitality):	PA
Fire behaviour:	Bfl-s1
EN 1307 Classification:	Cl. 33 Commercial Heavy



442 / Zen / Ivory 2

