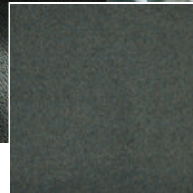
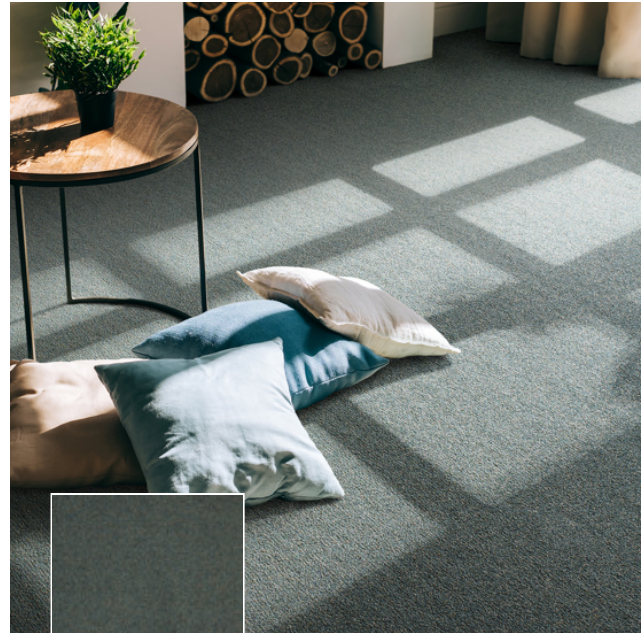


## Odina

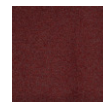
Polyamide carpet, known for its durability, can be used in any room. One of the most important advantages is the fact that the carpet fibers can stand up to a lot of wear and tear. This makes the use of nylon carpeting especially practical in areas where there is a lot of foot traffic since the synthetic fibers hold their shape longer than many other types of fibers. As a result, the pile of the polyamide carpeting looks new and fresh for many more years than other carpeting selections.

### TECHNICAL SPECIFICATIONS

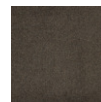
Secondary backing:	SB
Quality code:	ODI
Manufacturing process:	Tufted
Manufacturing process (hospitality):	Tufted
Pile composition:	PA
Pile composition (hospitality):	PA
Fire behaviour:	Cfl-s1
EN 1307 Classification:	CL 23 Commercial General



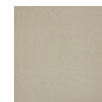
690 / Odina / Satin jade



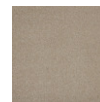
110  
Carmine



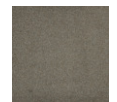
200  
Chocolate



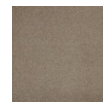
240  
Cream



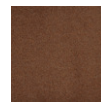
250  
Magnolia



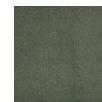
260  
Camel



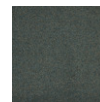
270  
Almond



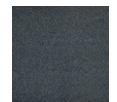
310  
Rust



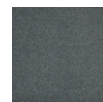
610  
Ivy



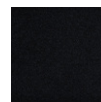
690  
Satin jade



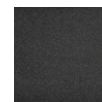
710  
Atlantic



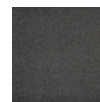
780  
Steel



800  
Ebony



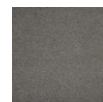
810  
Charcoal



820  
Slate



840  
Moonshine



860  
Granite