

Square

Polyamide carpet, known for its durability, can be used in any room. One of the most important advantages is the fact that the carpet fibers can stand up to a lot of wear and tear. This makes the use of nylon carpeting especially practical in areas where there is a lot of foot traffic since the synthetic fibers hold their shape longer than many other types of fibers. As a result, the pile of the polyamide carpeting looks new and fresh for many more years than other carpeting selections.

TECHNICAL SPECIFICATIONS

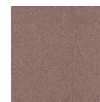
Secondary backing:	SB
Quality code:	SQS
Manufacturing process:	Tufted
Manufacturing process (hospitality):	1/10" Cut Pile
Pile composition:	PA
Pile composition (hospitality):	PA
Fire behaviour:	Bfl-s1
EN 1307 Classification:	Cl. 33 Commercial Heavy



262 / Square / Camel 2



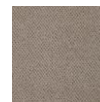
122
Coral 2



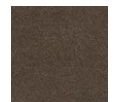
183
Rum 3



252
Magnolia
2



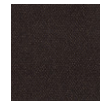
262
Camel 2



282
Havana
2



312
Rust 2



403
Coffee 3



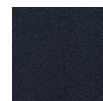
452
Sand 2



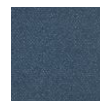
462
Hemp 2



682
Juniper 2



701
Navy 1



772
Sapphire
2



811
Charcoal
1



822
Slate 2



823
Slate 3



842
Moonshine
2



862
Granite 2